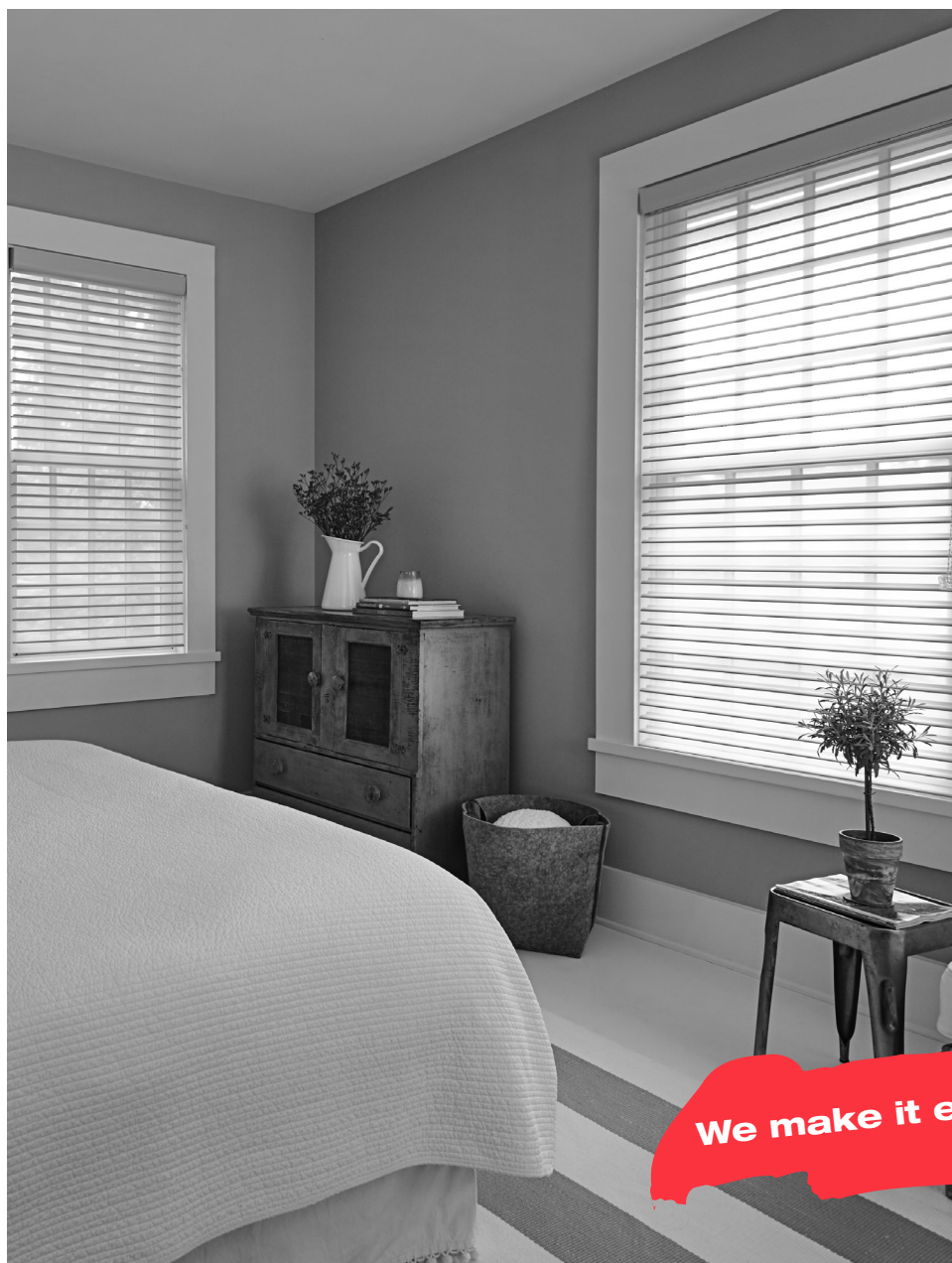




Serenity™ / Cascade Shade Installation Guide



We make it easy!

BTG 468348

CA_rev0217

Warning labels/tags that MAY* come with this product:

(To conform to government and industry regulations)
*Depending on style and options ordered.

For cord safety information:
1-866-662-0666 or www.healthcanada.gc.ca/blindcords



Cords and bead chains can loop around a child's neck and STRANGLE. Always keep cords and bead chains out of children's reach. Move furniture away from cords and bead chains. Children can climb furniture to get to cords.



Young children can STRANGLE in cord and bead chain loops. They can also wrap cords around their necks and STRANGLE. Always keep cords and bead chains out of children's reach. Move cribs, playpens, and other furniture away from cords and bead chains. Children can climb furniture to get to cords. Attach tension device to wall or floor. This can prevent children from pulling cords and bead chains around their necks. Fasteners provided with the tension device may not be suitable for all mounting surfaces. Use appropriate anchors for the mounting surface conditions.

Before starting

Your new Blinds To Go® Serenity™ shade is custom made to your specifications from the finest material available. The installation should be easy and your shade should fit beautifully.

Mounting options

Inside mount: Shade is mounted inside the window frame, either to the top of the frame or to the sides.

Outside mount: Shade is mounted either on or outside the window frame.

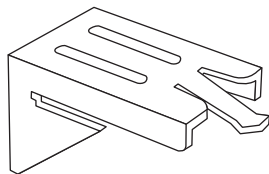
Note: Mounting screws provided are suitable for most mounting surfaces. See below for additional suggestions.

For wallboard or plaster: Use hollow wall anchors for added support.

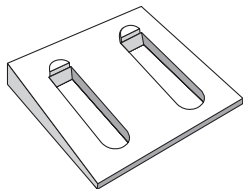
For concrete, stone, brick or tile: Use an appropriate drill bit and appropriate anchors before fastening the screws.

For metal surfaces: Pre-drill holes before fastening the screws.

Parts



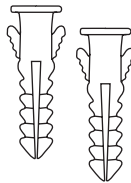
Mounting brackets
Quantity: 2 or more depending
on width of blind



Plastic wedges
Quantity: 1 per bracket



Screws
Quantity: 2 per bracket

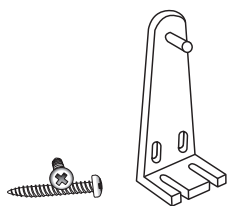


Anchors
Quantity: 2 per bracket

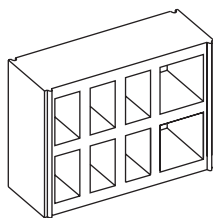
Suggested tools

- Drill
- Level
- Pencil
- Screwdriver
- Tape measure

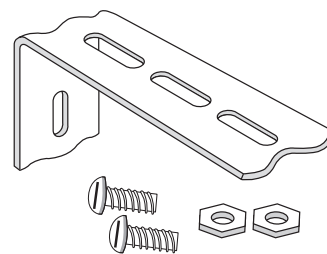
Optional hardware *(only provided for specific applications)*



Hold-down brackets and screws
Quantity: 2 sets (*Serenity™ Shades only*)



Spacer blocks
Quantity: same number as mounting brackets

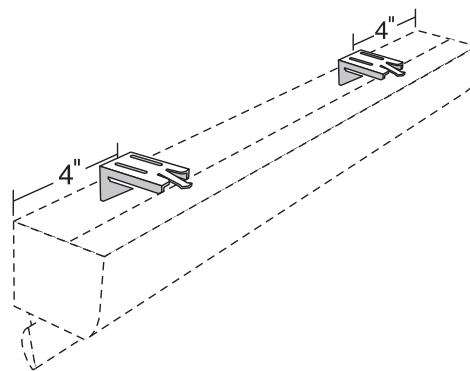


Side mount/extension brackets
Quantity: 2 or more,
depending on width of blind and desired use

Getting started

Step 1. Mounting the brackets

1. Hold the shade to where you want to mount it and mark **approximately 4" in from each end of the headrail**. This is where your brackets will go. This can also be done by measuring the headrail and marking the corner positions of the headrail on the mounting surface. Then mark approximately 4" in from each end. In each case, we recommend you use a level.

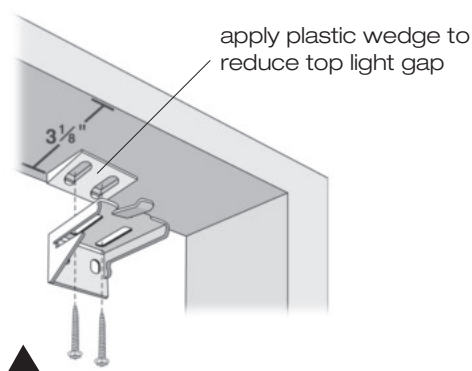


Note: When more than two brackets are supplied, position the additional brackets evenly between the two end brackets.

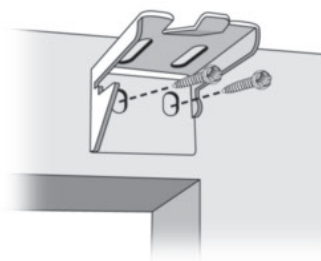
2. Using 2 screws per bracket, fasten the brackets to the mounting surface. When required, apply the plastic wedges to reduce top light gap.

Note: If you have ordered *spacer blocks* or *side mount/extension brackets*, apply as illustrated.

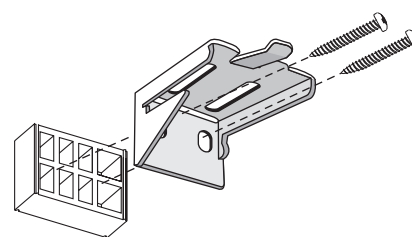
inside mount



outside mount

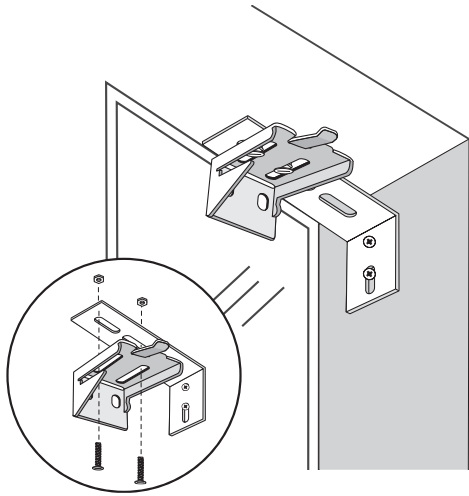


*applying spacer block
(optional)*

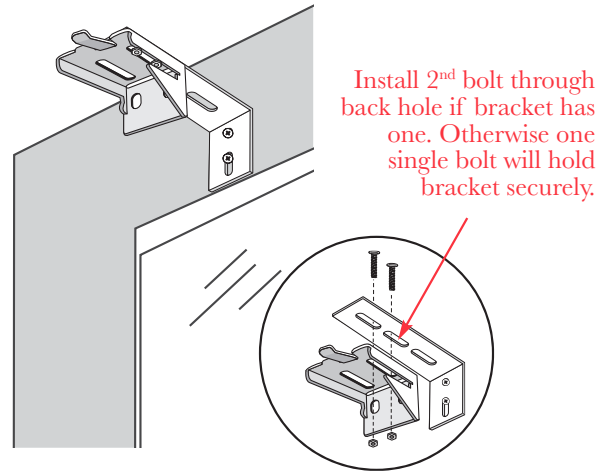


For the blind to be flush within the frame, the back edge of the brackets should be 3 1/8" back from the front of the frame.

applying side mount bracket (optional)



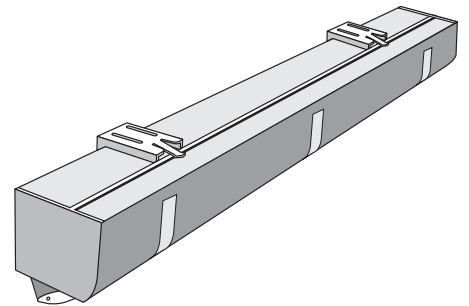
applying extension bracket (optional)



or

Step 2. Fitting the shade into the brackets

Note: Make sure the shade is in the closed position before mounting the shade. Install the shade in the brackets before removing the adhesive tape that holds the base of the shade.

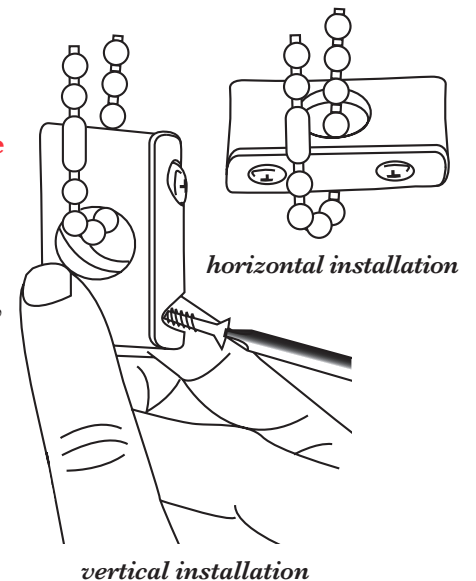


Step 3. Securing the tie-down safety device

The Serenity™/Cascade tie-down device provided has been created to comply with improved child safety laws. **This mechanism must be attached to the surrounding wall or frame for the shade to operate correctly.**

1. Compress the tension device and slide it all the way down the chain.
2. Insert screws into each hole, then position the device on the wall or moulding, pulling down slightly to ensure proper tension. The chain should be taut on both sides, but not so taut that the connector cannot pass through the hole.
3. Compress the tension springs by pushing on the surface on which it will be mounted. Use a screwdriver and the screws provided to install the device. Ensure the chain and connector can move freely through the tie-down device.

Note: Use appropriate wall anchors if necessary (see the note on page 2).



Step 4. Mounting the hold down brackets
(Serenity only, if you have ordered hold down brackets)

1. Lower the shade to the desired height.
2. Position the hold down brackets so that their tabs are aligned with the holes at each end of the bottom rail.
3. Mount the brackets with the screws provided.

